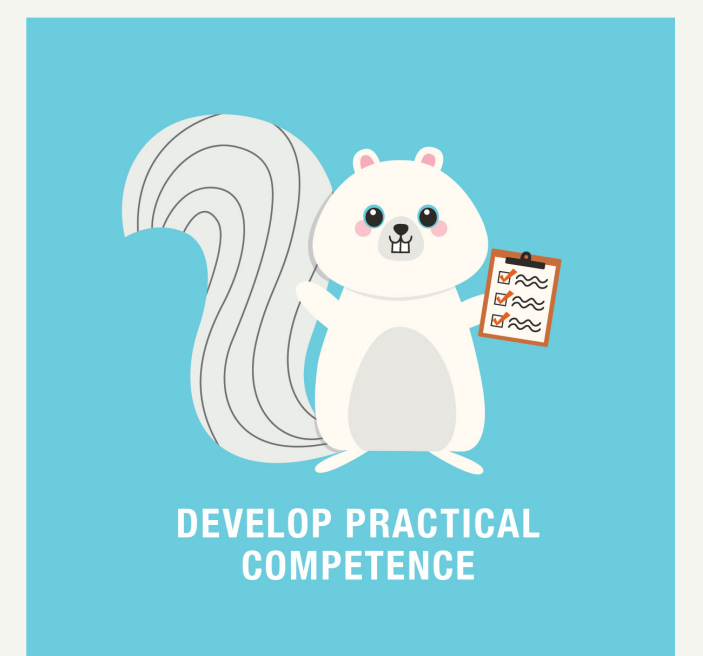
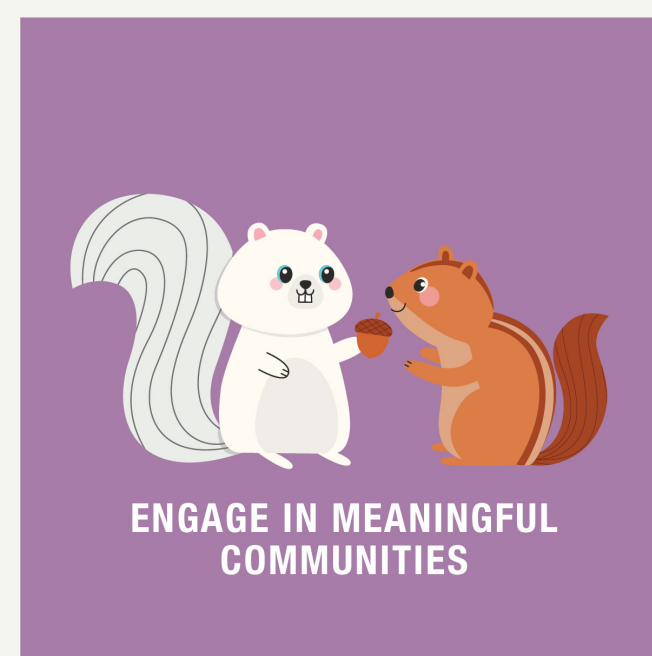
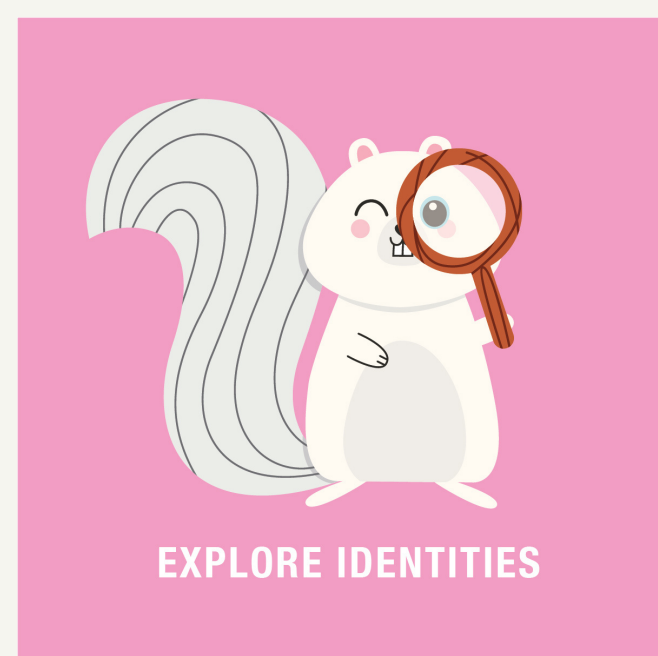
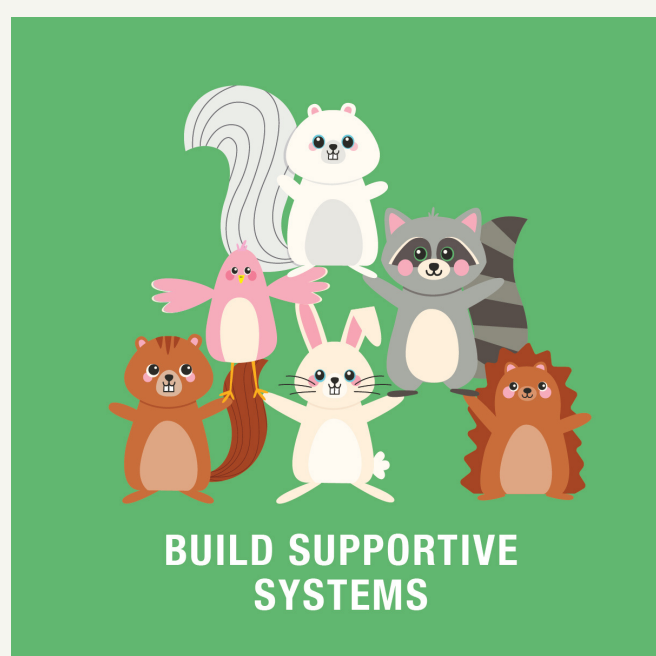


REM | RESIDENTIAL EDUCATION MODEL

IN SUMMER 2021, THE RESIDENTIAL EDUCATION STAFF REVIEWED AND REVISED OUR CURRICULAR APPROACH TO THE RESIDENTIAL EXPERIENCE.

Oberlin College students while living in residential education housing will participate in the Residential Education Model (REM). As a result of participating in the Residential Education Model students will:



REM | RESIDENTIAL EDUCATION MODEL



3 out of 4

students who attended a floor meeting feel a part of their community.

A SENIOR LEARNED:

How to manage a space and keep it clean.

93%

of students who attended a floor meeting have met at least one other person on floor/in thier house.

A SOPHOMORE LEARNED:

HOW TO FUNCTION LIVING ALONGSIDE 3 OTHER PEOPLE.

All

students living on campus knew the name of their RA or VA.

A JUNIOR LEARNED:

The imporance of communication.