

The future of the tropical forests of the world under Business as Usual

**~20% of global annual  
greenhouse gas emissions**

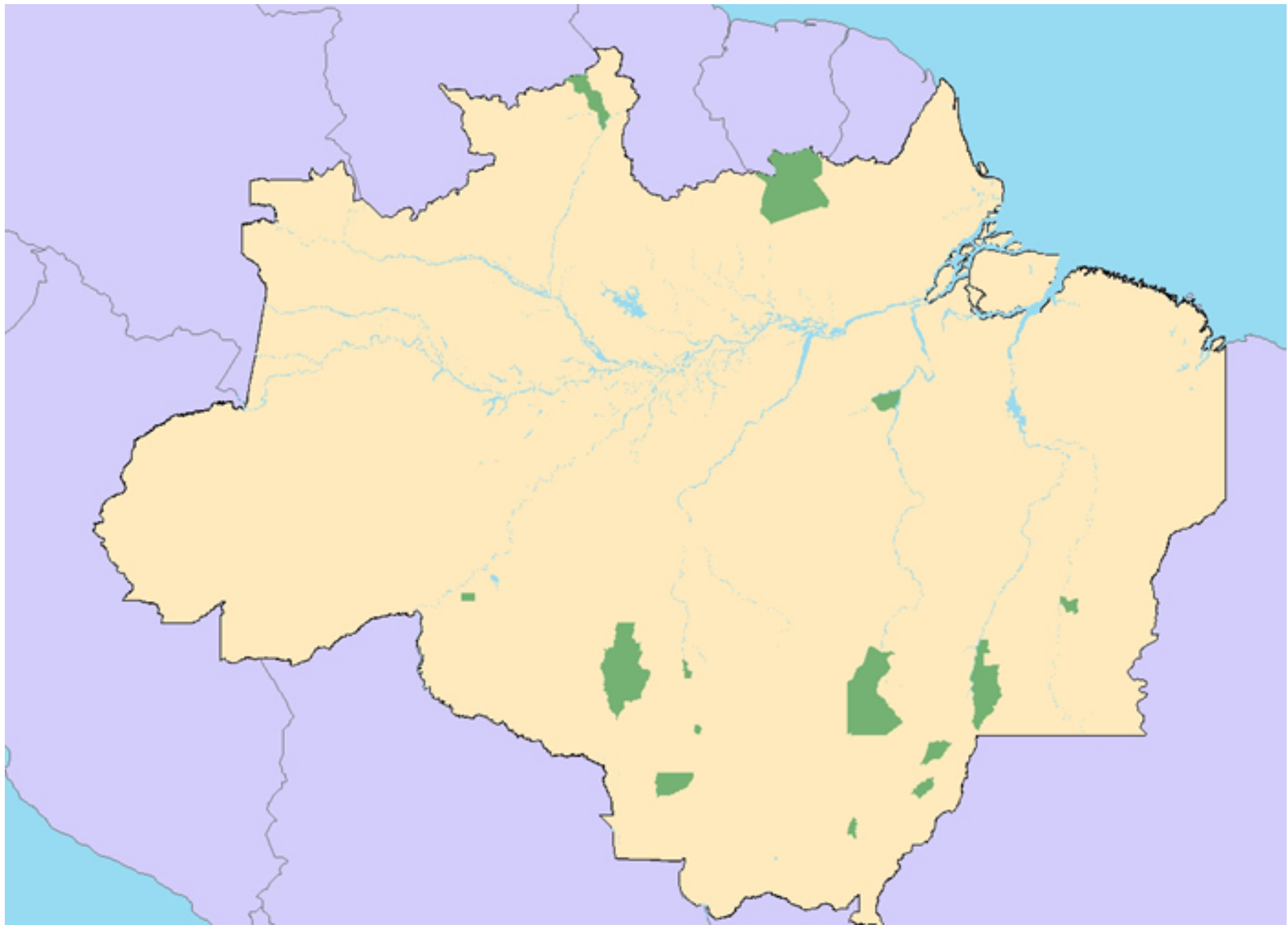


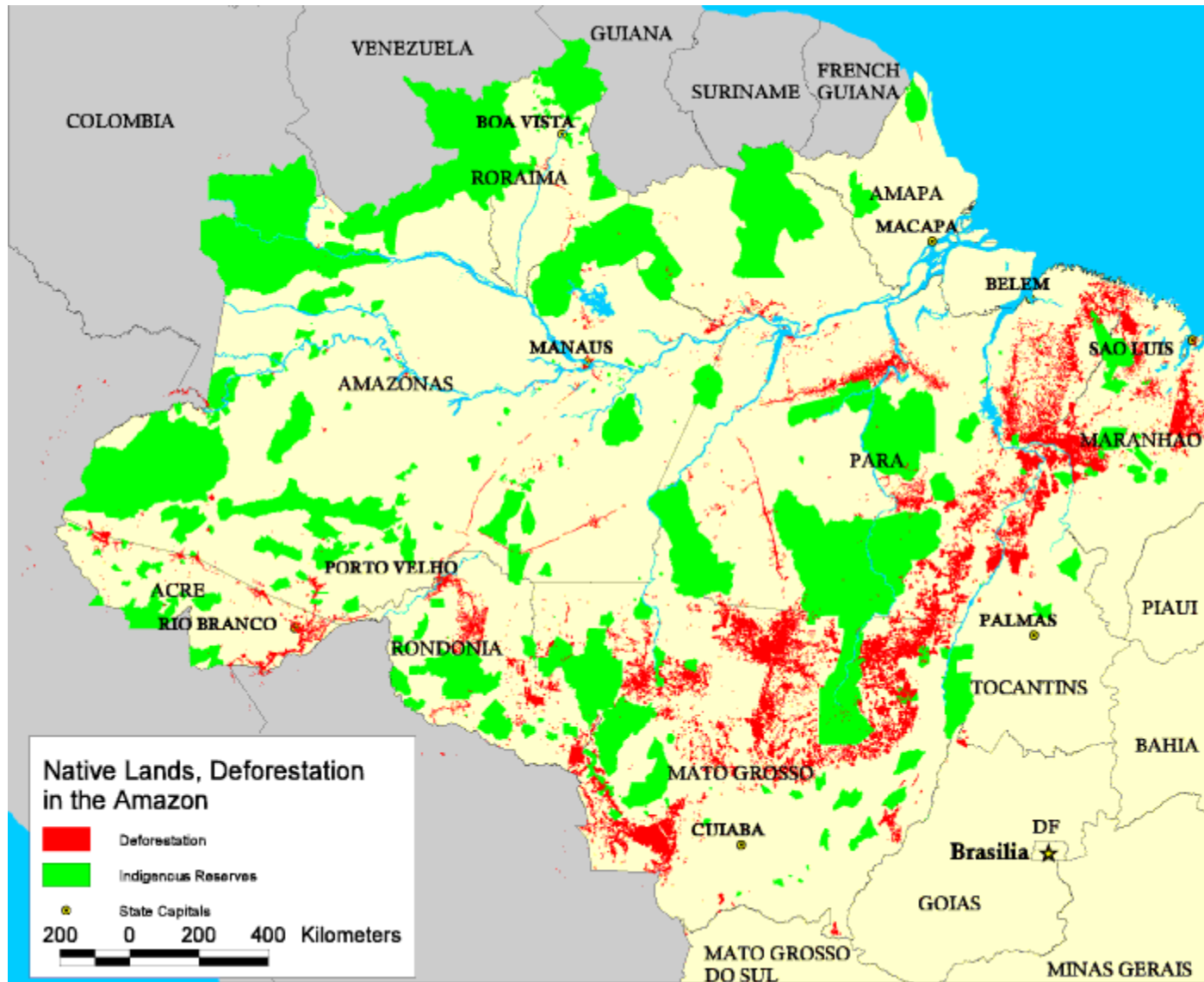




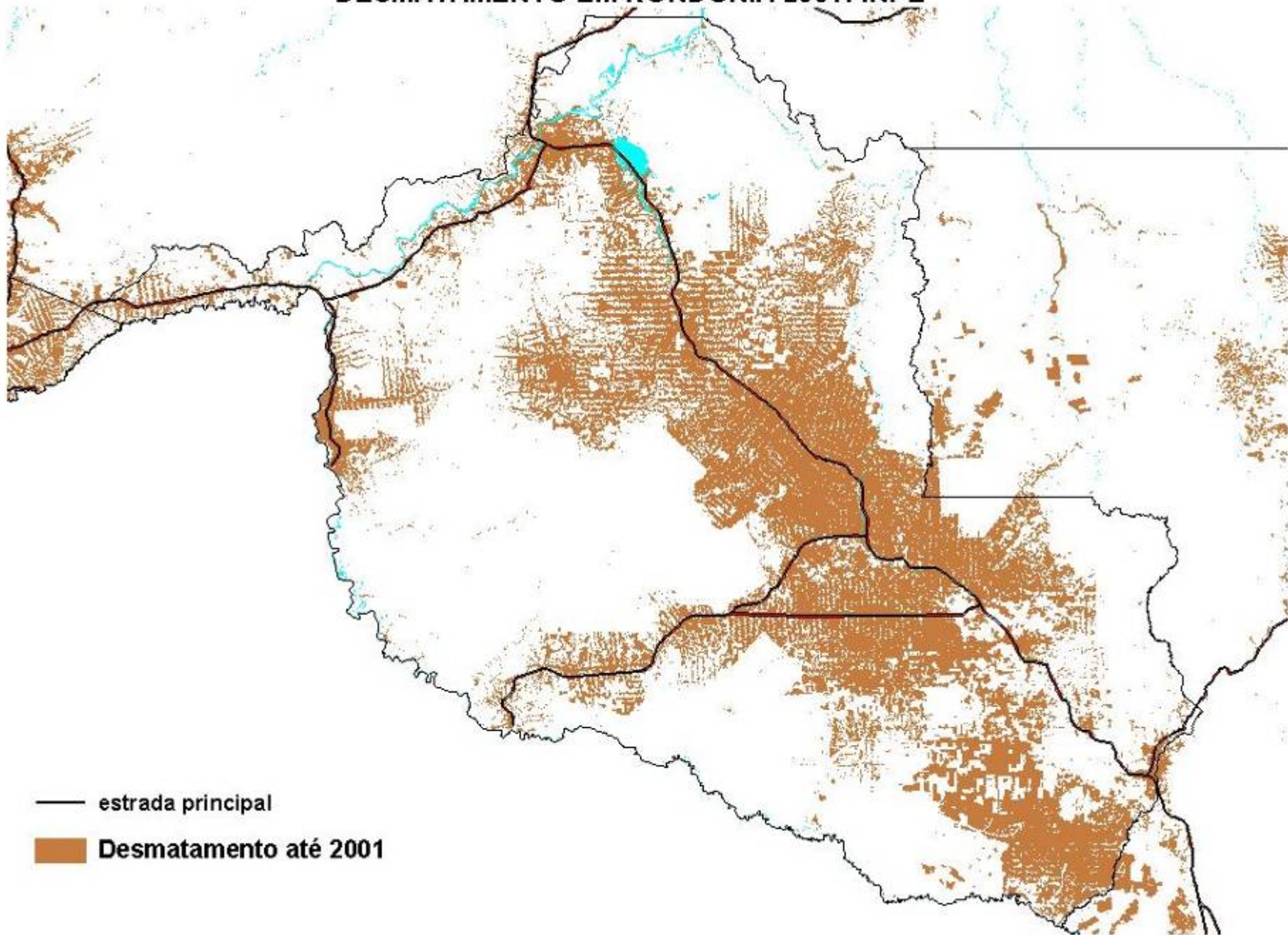




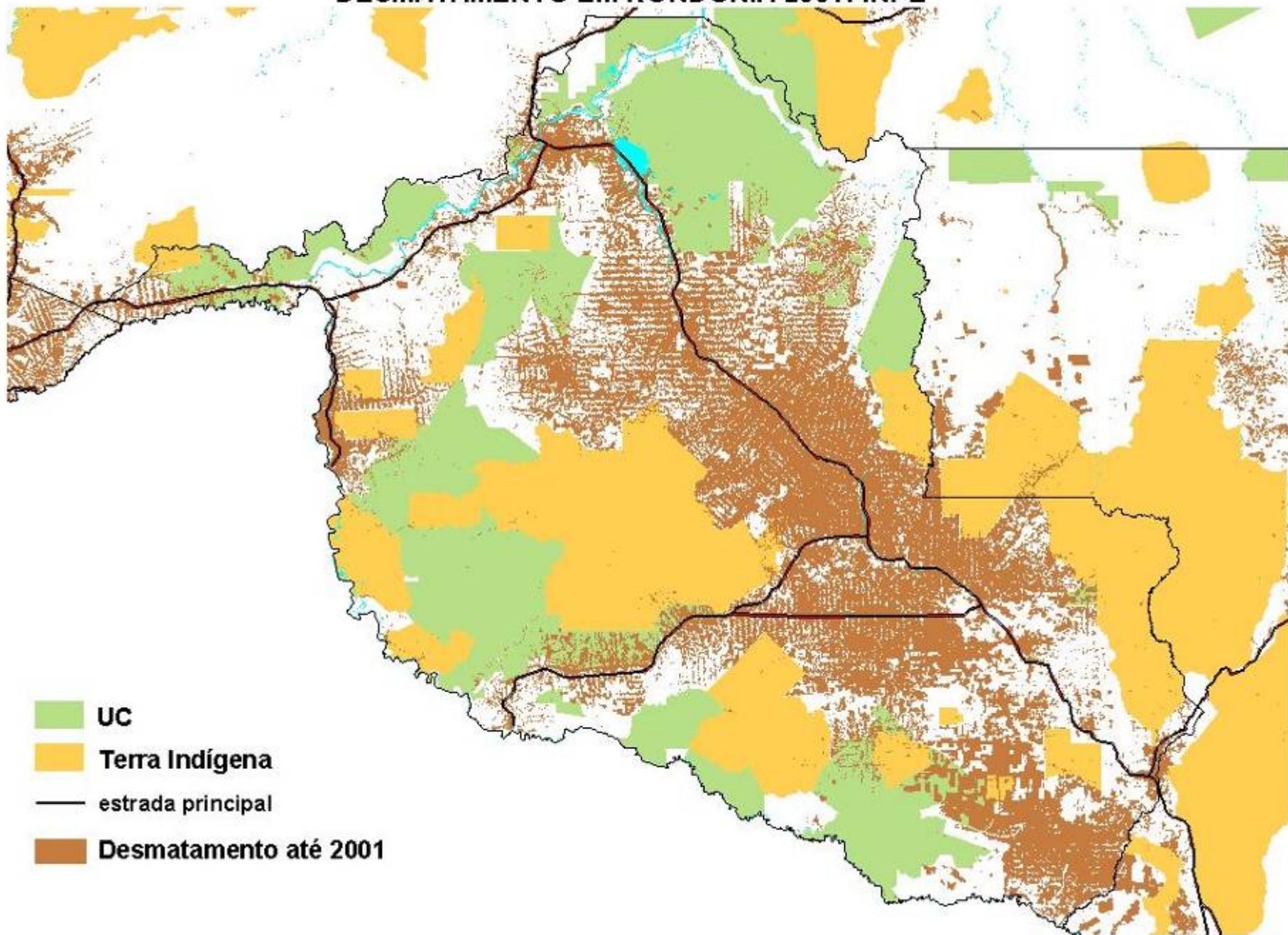


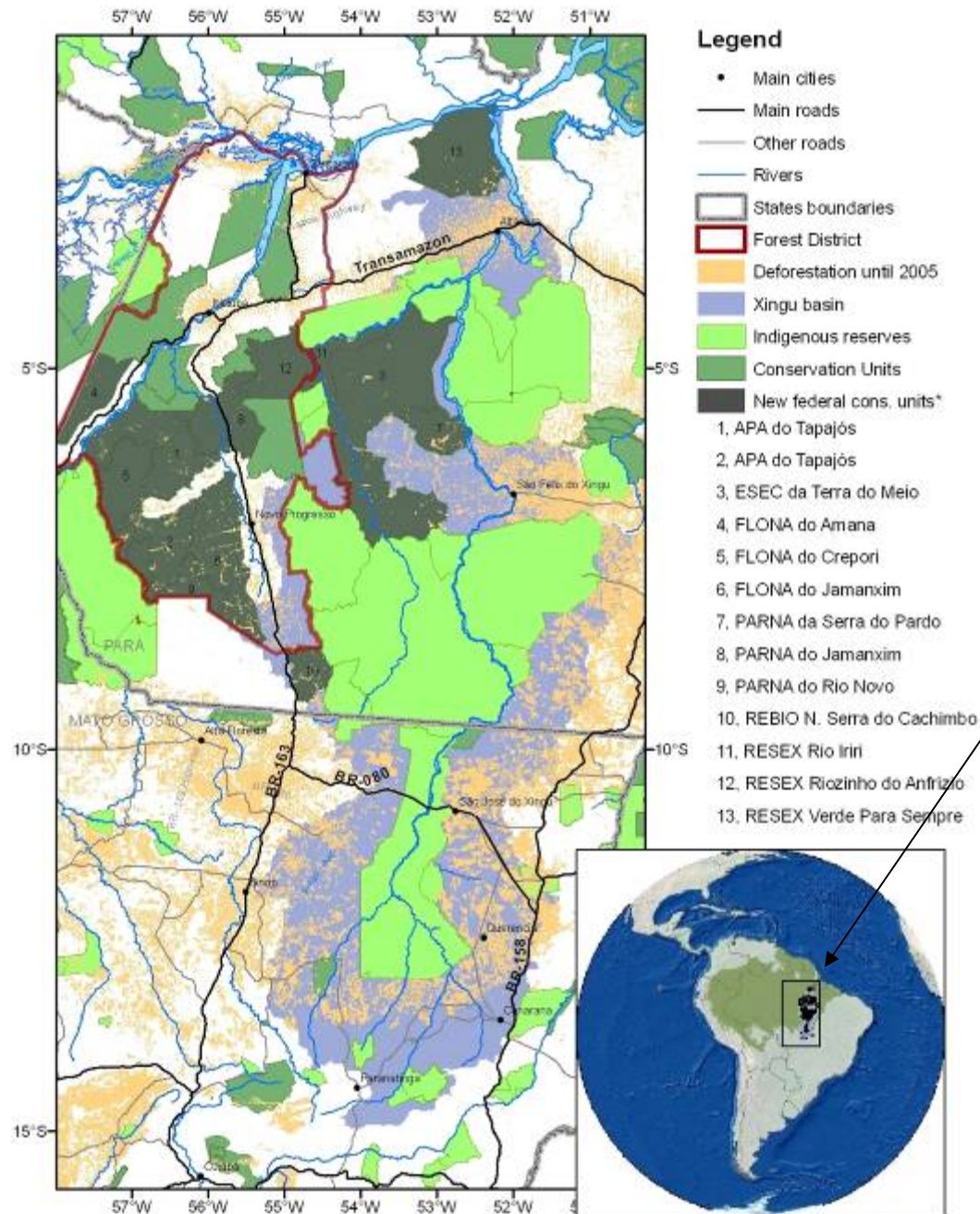


# DESMATAMENTO EM RONDÔNIA 2001: INPE



# DESMATAMENTO EM RONDÔNIA 2001: INPE



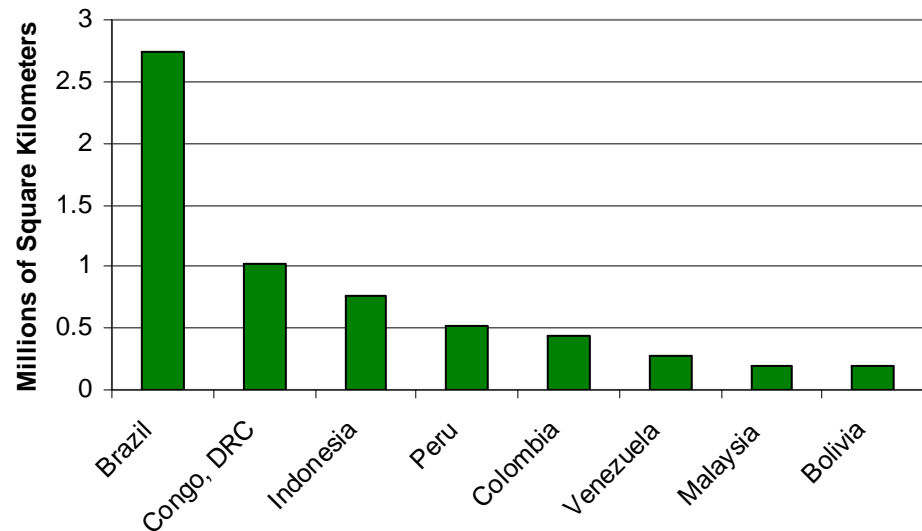


Terra do Meio reserves  
mosaic and Xingu basin  
protected areas corridor -  
~26 million ha

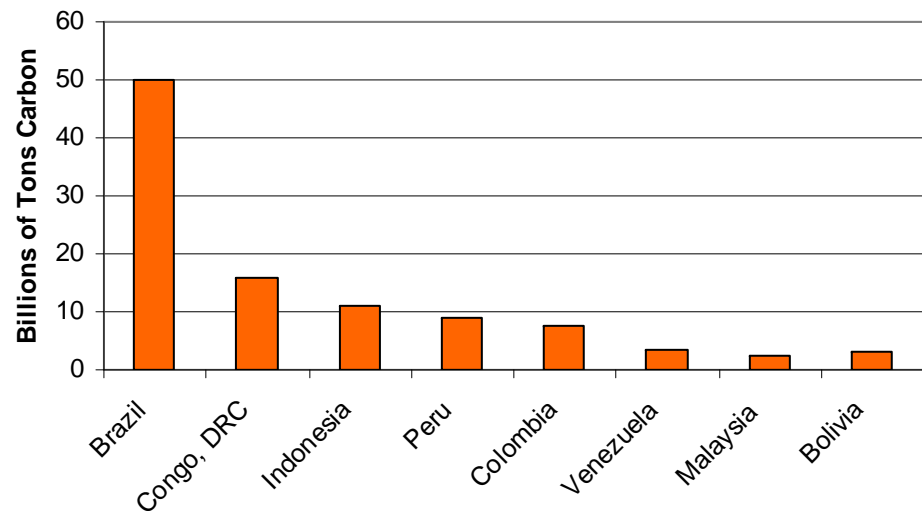
Agroindustry will expand into high-biodiversity, high carbon tropical forests inhabited by indigenous and traditional peoples.

Source -- Stickler, C., M. Coe *et al.*, 2007. Readiness for REDD: A preliminary global assessment of tropical forestedland suitability for agriculture. [whrc.org/BaliReports/](http://whrc.org/BaliReports/)

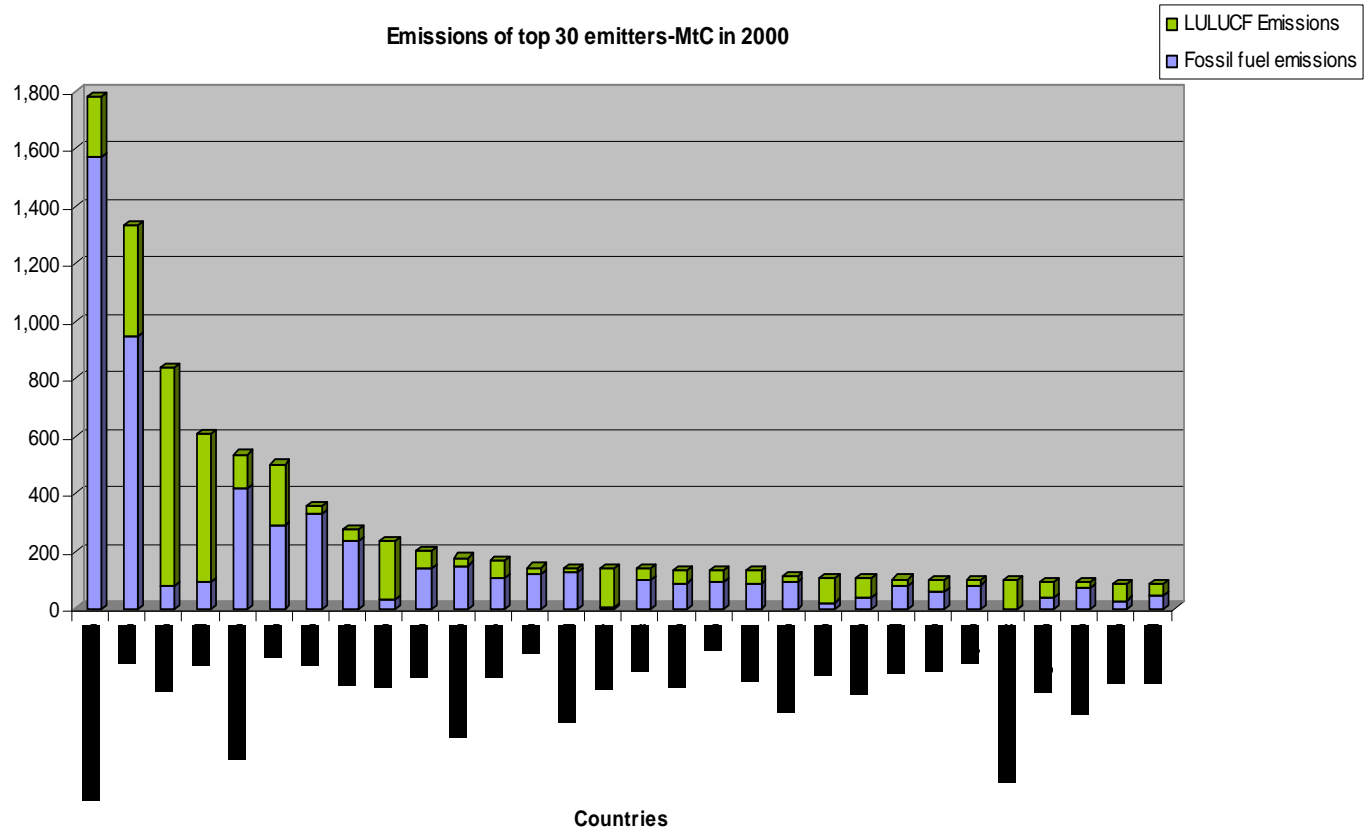
**Forest Area with High Potential for Soy, Palm Oil, or Sugar Cane**



**Forest Carbon on Lands with High Potential for Soy, Palm Oil, or Sugar Cane**



Emissions of top 30 emitters-MtC in 2000





united nations  
climate change conference

Bali, Indonesia, 14 December 2007

## Three MIT Scenarios of US Emissions Reductions and Brazilian Reduced Deforestation Credits

