

Installing printers using the Iprint printing system

This document contains sections for Windows, Macintosh and Linux. Each section has instructions for Automated and Manual printer setups.

Windows

A. Automated setup

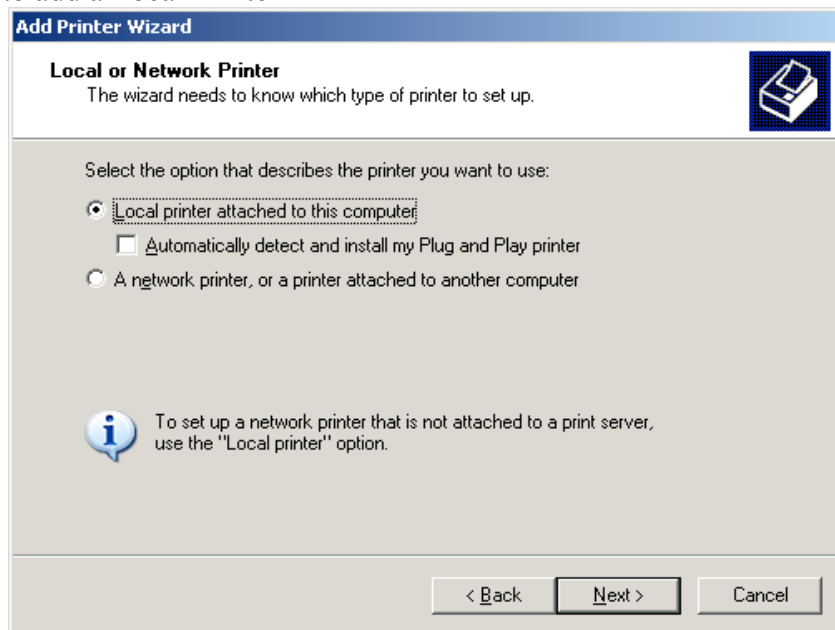
1. Automated printer setup must be done using only Internet Explorer 5.5 or higher. Point your browser to

<http://www.oberlin.edu/cit/iprint>
2. Click “Install iPrint Client” in the upper right of the browser window to install the Novell iPrint client and reboot your computer.
3. Browse back to <http://www.oberlin.edu/cit/iprint>
4. Click the printer you would like to install. The printer will install automatically, including configuring the drivers for you.

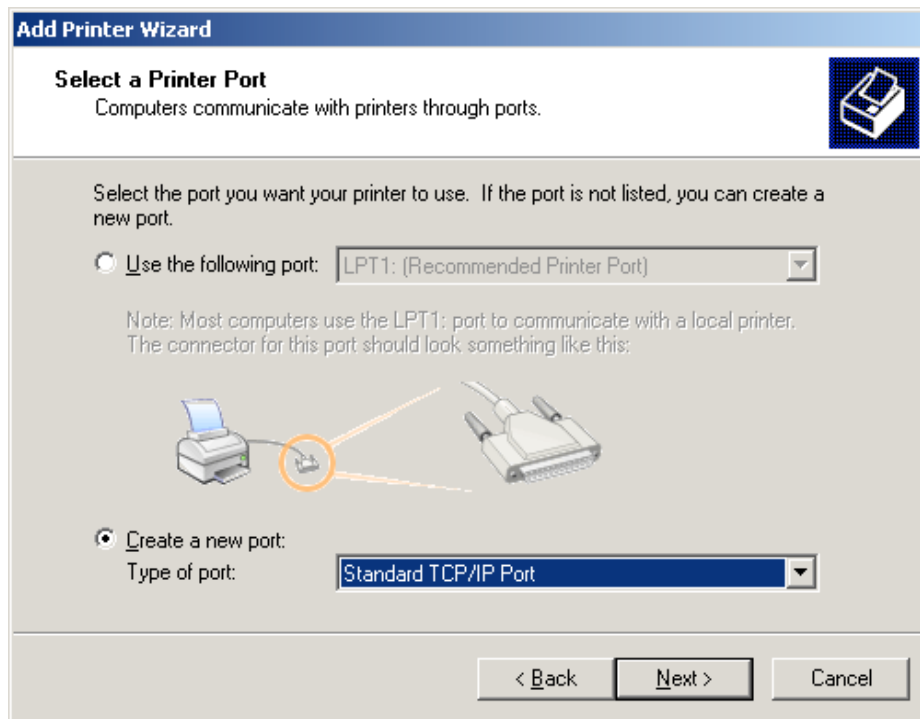
B. Manual Setup

If you cannot use Internet Explorer and the automated setup fails, or you wish to set up printers manually, do the following.

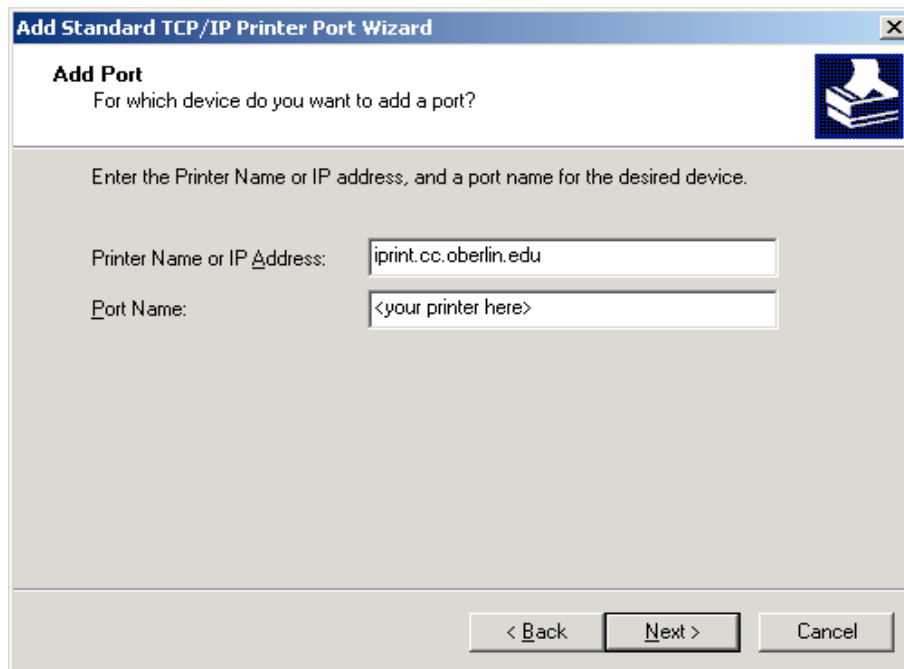
1. Start the “Add Printer Wizard”
2. Choose to add “A Network Printer, or a Printer attached to another computer”
3. Choose to add a Local Printer



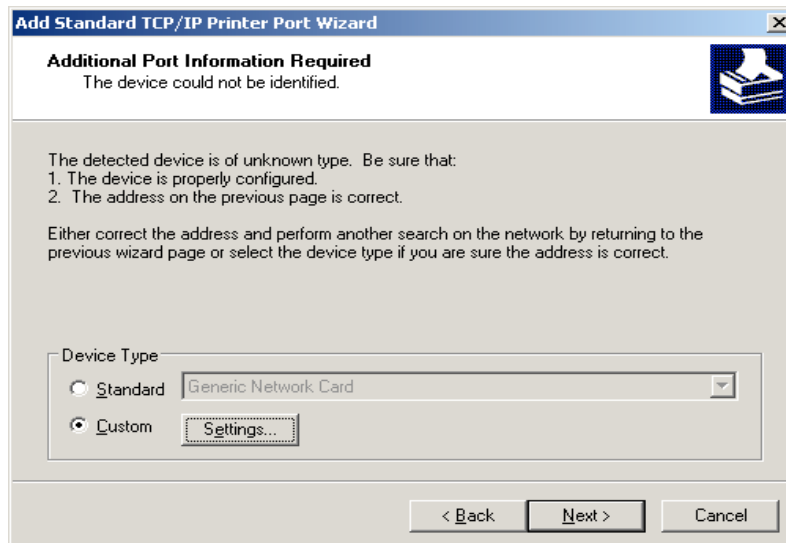
4. Click 'Create a New Port' and select "Standard TCP/IP Port". Click Next



5. Click 'Next' on the 'Welcome to the Add Standard TCP/IP Printer Port Wizard' window.
6. Type in the printer server (iprint.cc.oberlin.edu) and your printer name. You can get your printer name from the label of the front of your printer, or visit [http:<web page>](http://<web page>) to see a list of all available printers. Click Next.



7. On the next screen, click 'Custom' then click the 'Settings' button



8. Enter the printer name in the "Queue Name" dialog box. Ensure that the "LPR Byte Counting Enabled" checkbox is selected. Click OK. The system will then prompt you for the appropriate printer driver.

Configure Standard TCP/IP Port Monitor [?] [X]

Port Settings

Port Name: <your printer here>

Printer Name or IP Address: iprint.cc.oberlin.edu

Protocol

Raw LPR

Raw Settings

Port Number: 9100

LPR Settings

Queue Name: {your-printer-here}

LPR Byte Counting Enabled

SNMP Status Enabled

Community Name: public

SNMP Device Index: 1

OK Cancel

Mac OSX Instructions:

Automated setup

1. Automated printer setup must be done using only Apple's Safari (Macintosh OS 10.3.x or higher) or Mozilla's Firefox (version 2.x). Point your browser to
<http://www.oberlin.edu/cit/iprint>
2. Click "Install iPrint Client" in the upper right of the browser window to install the Novell iPrint client.
3. Browse back to <http://www.oberlin.edu/cit/iprint>
4. Click the printer you would like to install. The printer will install automatically, including configuring the drivers for you.
5. Close Safari or Firefox.

Manual setup

Manual Setup for Mac OS 10.5.x:

Open the System Preferences under the Apple menu. Click on the Print & Fax icon.

1. Click on the <+> sign button to add a printer.
2. Click on the **IP** icon in the toolbar of the window that opens.
3. Choose Protocol: **Line Printer Daemon – LPD**
4. Type in for the Address: **iprint.cc.oberlin.edu**
5. Queue: **Enter the name of the print queue to use.** (The print queue name can be found on a label on the front of the printer, or visit <http://www.oberlin.edu/cit/iprint> for a list of all available printers.)
6. Change the Name: field to the **same name in the Queue name used above** in Step 4.
7. Select a printer model from the popup menu, or if your printer model is not listed leave it with the default of "Generic".
8. Click the <Add> button to close the dialog, Check any installable options for your particular printer and click <Continue>.
9. Then quit System Preferences.

Manual Setup for Mac OS 10.4.x:

Open the Printer Setup Utility (Mac OS 10.3.x or higher) application in Applications/Utilities folders.

1. Select <Add>.
2. Click on the **IP Printer** to the right of **Default Printer** button.
3. Choose Protocol: **Line Printer Daemon – LPD**
4. Type in for the Address: **iprint.cc.oberlin.edu**
5. Queue: **Enter the name of the print queue to use.** (The print queue name can be found on a label on the front of the printer, or visit <http://www.oberlin.edu/cit/iprint> for a list of all available.)
6. Change the Name: field to the **same name in the Queue name used above** in Step 4.
7. Select a printer model from the popup menu, or if your printer model is not listed leave it with the default of "Generic". Click the <Add> button to close the dialog, and then quit Printer Setup Utility.

Manual Setup for Mac OS 10.3.x

Open the Printer Setup Utility (Mac OS 10.3.x or higher) application in Applications/Utilities folders.

1. Click on the <Add> Button
2. Select "**IP Printing**" from the popup menu.
3. Choose the Printer Type: **LPD/LPR**
4. Type in for the Printer Address: **iprint.cc.oberlin.edu**
5. Queue Name: **Enter the name of the print queue to use.** (The print queue name can be found on a label on the front of the printer, or visit <http://www.oberlin.edu/cit/iprint> for a list of all available printers.
6. Select a printer model from the popup menu, , or if your printer model is not listed leave it with the default of "Generic". Click the <Add> button to close the dialog, and then quit Printer Setup Utility.

Manual Setup for Mac OS 10.2.x: (Please contact the CIT Helpdesk, ext 58197, if you are still using Mac OS 10.2.x)

1. Click on the <Add> Button
2. Select "IP Printing" from the popup menu.
3. Printer Address: iprint.cc.oberlin.edu
4. Uncheck "Use default queue on server" and enter the name of the print queue to use. (The print queue name can be found on a label on the front of the printer, or visit <http://www.oberlin.edu/cit/iprint> for a list of all available printers.)
5. Select a printer model from the popup menu, or if your printer model is not listed leave it with the default of "Generic". Click the <Add> button to close the dialog, and then quit Print Center.

Linux instructions:

This will only work with RPM based linux distribution: (ie. Suse, RedHat, Mandrake) and the following Browsers: Konqueror or a Mozilla-based browser such as Epiphany, Firefox, or Galeon

Automated setup

1. Enter the iPrint server URL in your Web browser Address field:
<http://iprint.cc.oberlin.edu/cit/iprint>
2. Click the printer you want to install.
3. If the iPrint Client is not yet installed on your workstation, you are prompted to install it.
4. When prompted, save the iPrint Client RPM to your desktop or home directory.
5. Install the iPrint Client RPM by double-clicking the RPM. If a file association for the RPM does not exist, use an RPM installer program.
6. Exit and restart your Web browser before installing printers.
7. *NOTE:* If you are using the Konqueror browser, you must rescan for plug-ins by clicking Settings > Configure Konqueror Plug-ins > Plug-Ins > Scan for New Plug-ins. Then restart the Konqueror Web browser.
8. If you are using a non-standard installation of a browser, and the plug-in does not appear, create a symbolic link in the browser's plug-in directory using the following command:
`ln -s opt/novell/iprint/plugin/npnipp.so`

Manual Setup

Alternatively, the printer can be set up manually as an LPD/LPR printer, similar to the manual OSX and Windows instructions.