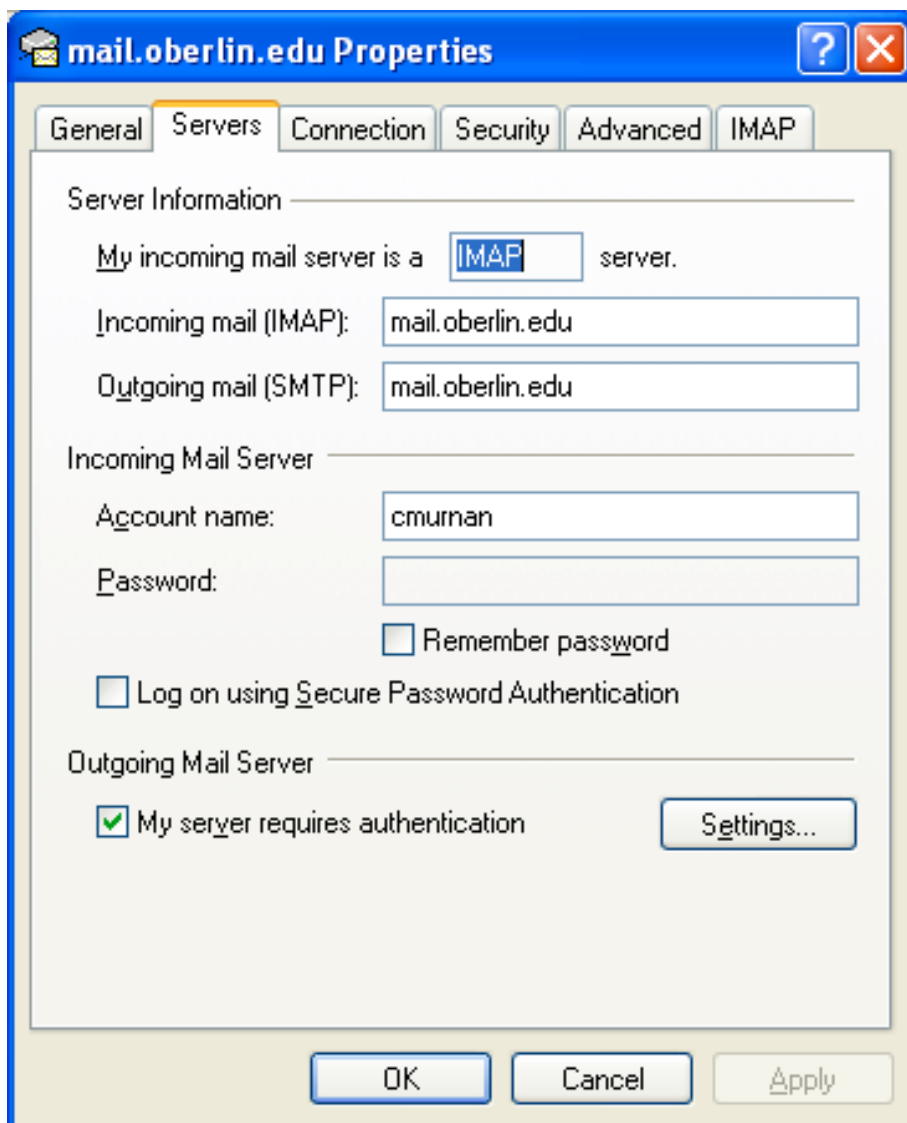
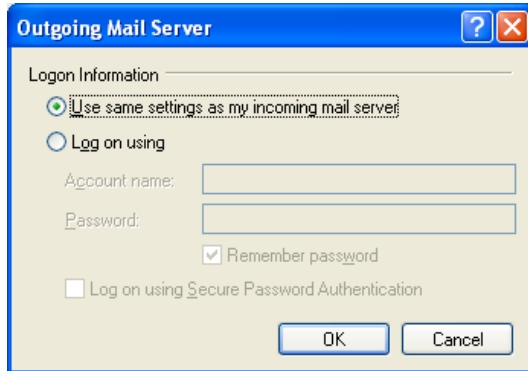


SMTP Authentication and SSL for Outlook Express

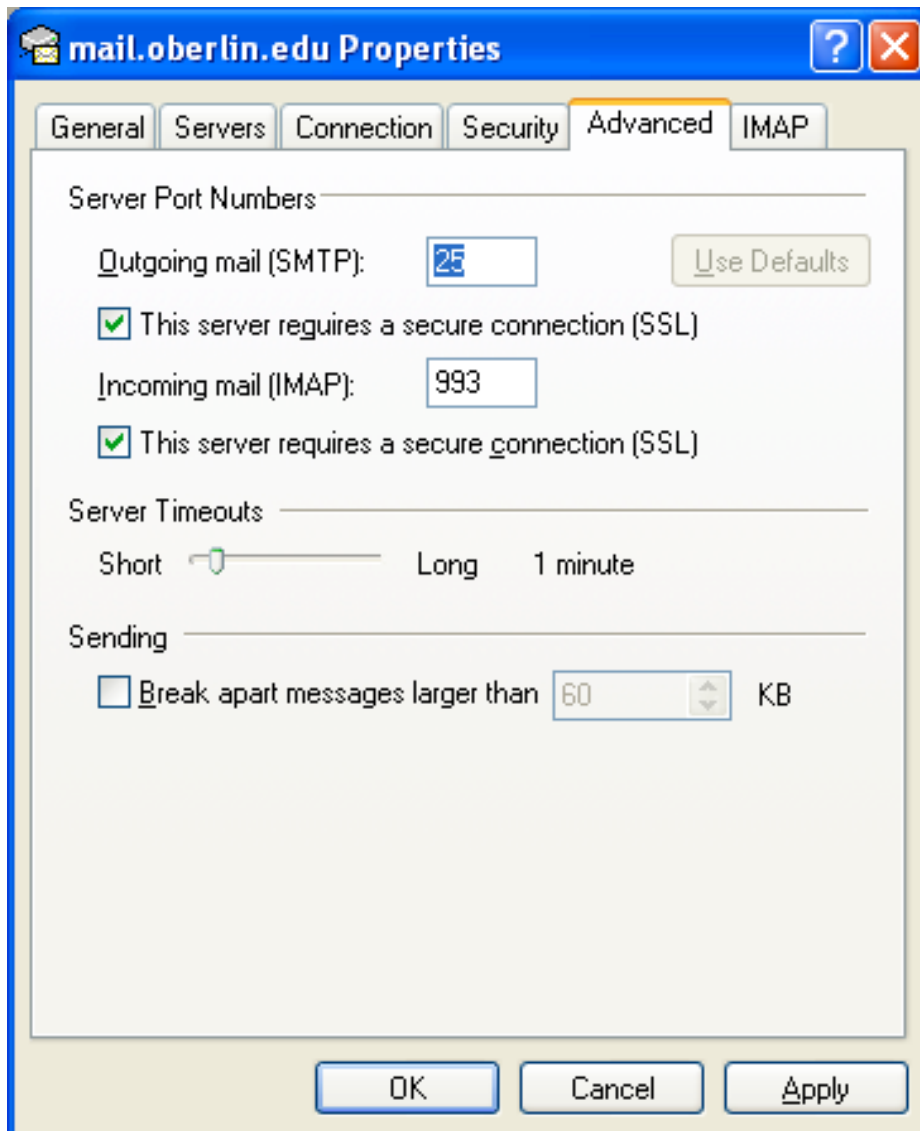
- Go to **Tools -> Accounts**
- Click on the **Mail** tab
- Click on the **Properties** button
- Go to the **Servers** tab
- Make sure the Incoming mail server and the Outgoing mail server are set to: **mail.oberlin.edu**
- Check the box, **My server requires authentication.**



- Click on **Settings**
- Select **Use same settings as my incoming mail server**
- Click **OK**



- Click on the **Advanced** tab



- Check both boxes, **This server requires a secure connection (SSL)**, for Outgoing mail and Incoming Mail
 - For Outgoing (SMTP), set the port number to 25
 - For Incoming (IMAP), set the port number to 993 (if using POP, set to 995)
- Click **Apply**
- Click **OK**
- Click **Close**

New, for every new session using your mail client, the first time you send a message, you will be asked for your email account username and password in order to authenticate.